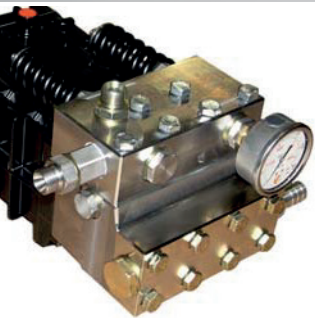


## CD25-500 High pressure water blasters



Stainless steel pump-head.  
 Integrated unloader valve.



Centralized and balanced  
 lifting eye.



Electronically controlled  
 engine.



Hot Dip galvanized frame.



Fuel level gauge.

<b>Model:</b>	<b>CD25-500</b>
<b>Technical details:</b>	
<b>Pump spec</b>	
W.P. Bar / Psi	500 / 7250
Flow Lpm / Gpm	17 / 4,2
Pump Speed Rpm	1750
<b>Engine spec</b>	
Type	Kubota Diesel 3 cyl. Water cooled
Power Kw / Hp	18,5 / 25
Rpm	3000
Fuel Tank – capacity	28 L / 7,5 Usg
Fuel consumption	5,7
L/ Hour	80
Noise db (A) 7m	
<b>Dimensions</b>	
L x W x H mm	1200 x 800 x 1300 x
Weight Kg	350

All models are CE marked

### Standard accessories incl. with each machine:

- 20m light weight thermoplastic high pressure hose c/w ½" BSPP female swivel connections.
- Trigger operated dry-shut gun c/w 0,85m long stainless steel lance.
- Straight jet spraying nozzle.

### Optional accessories for each model:

- 20m Wear resistant high pressure hose c/w ½" BSPP female swivel connections (Extension hose).
- Rotating nozzle.
- Sand blasting kit c/w boron carbide nozzle.
- Mobile abrasive container.
- Spare part kit.



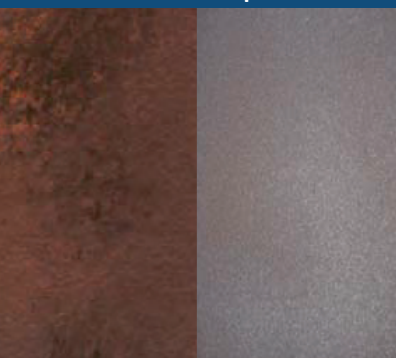
Rotating Nozzles



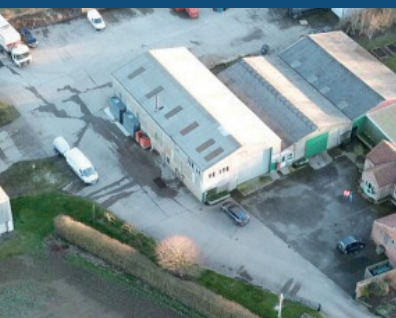
Wet Sand Blasting Equipment.



Wet Sand-blasting on Corroded steel plates



Before & After



Hydroblast based in Yorkshire England

## UHP accessories (< 40.000PSI)

- Ultra high pressure guns.
- Rotating Nozzles.
- Floor/Deck cleaners.
- Hoses & Fittings.
- Nozzles & Nozzle carriers.
- Filters & Filtration systems.

## WB accessories (< 20.000PSI)

- Dump & Dry Shut guns.
- Foot valves.
- Unloader & Safety valves.
- Hoses & Fittings.
- Nozzles & Nozzle carriers.
- Wet Sand-Blasting Equipment.
- Strainer & Filters.

## Spareparts for other brands

- Guns & accessories.
- Fittings & connections.
- Internal pump parts.
- Packings & repair kits.
- Nozzles & Nozzle carriers.

## Protection & Safety equipment

- Water jet protection.
- Dress.
- Boots.
- Helmet, Visor & Gloves.
- Rain suits.
- Hose protection.

## CE 20 Series

- Complete product range of electrically driven high pressure waterblasters ranging from 170 to 500 Bar in a compact design for multi purpose applications.
- Various accessories.

## Company Profile:

Hydroblast's experience in the high pressure water jetting industry has enabled us to gain access to a range of water jetting pumps and accessories, suitable for numerous applications in the industrial and marine industries.

Hydroblast can supply complete packages to end-users as well as bare shaft pumps and parts. Our main goal is to supply quality products at a competitive price level.

