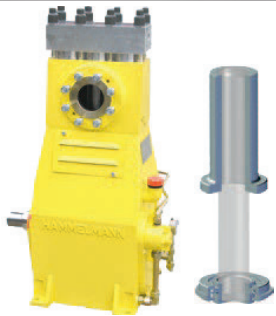


## Aqua 20

1400 Bar, 78 Lpm



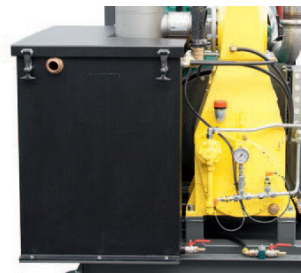
The endurance runner in top quality



Energy savings through high efficiency



Sturdy industrial engine



Safe operation



High mobility

<b>Model / Technical Details</b>	<b>Aqua 20 1400</b>
<b>Pump Spec.</b> W.P bar / PSIFlow Lpm	1400 bar / 78 Lpm 2800 bar / 40 Lpm
<b>Engine Spec. Type</b> Emission system Power Kw / Hp Engine Speed RPM Fuel Tank, Liter Fuel rate L/h	235Kw / 203HP
<b>Dimensions</b> L x W x H m / Weight t	4.93 m x 2.20 m x 2.64 m / 3.5t

### Features:

- Operating pressure: 1400 bar/ available conversion kit 2800 bar 40lpm
- Flow rate: 78 l/m
- Motor: 203HP Volvo Penta Diesel
- Pump Type: Hammelmann
- Operating hours: Used please contact us
- Model: Aqua 20
- Manufactured: 2018

### Standard accessories incl. with each machine:

- Gun
- Lance
- Pencil nozzle

### Optional accessories for each model:

- Rotary nozzle
- Hose reels
- PPE



1600 Bar M24 Hose

## Aqua 20 1400 Accessories



Hose Reel



Layflat Type 2 Fire Hose



UHP Water Jetting Wellies



Helmet And Visor



Control Cable 50m



TST Suit 10/28 – 20/30



3000 BAR Dump Gun



Hydroblast 952 Pencil Nozzle



Hydroblast Rotary Nozzle  
HP/UHP

### Company Profile:

Hydroblast's experience in the high pressure water jetting industry has enabled us to gain access to a range of water jetting pumps and accessories, suitable for numerous applications in the industrial and marine industries.

Hydroblast can supply complete packages to end-users as well as bare shaft pumps and parts. Our main goal is to supply quality products at a competitive price level.